

REV.	DESCRIPTION	DATE
A	RELEASED	2019/04/15

NOTES:

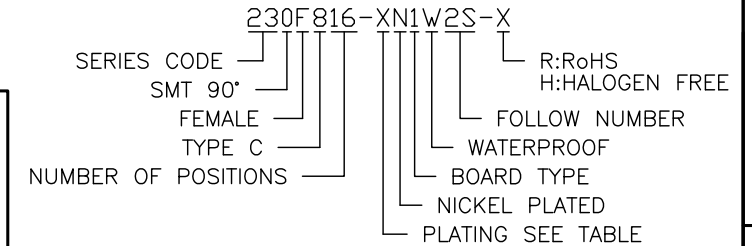
SPECIFICATION:

1. CURRENT RATING: 3.0A MAX.
2. DIELECTRIC WITHSTAND VOLTAGE: 100VAC.
3. TEMPERATURE RANGE: -30 °C ~ 85 °C.
4. CONTACT RESISTANCE: 40 MILLIONHM MAX.
5. INSULATION RESISTANCE: 100 MEGOHMS MIN.
6. INSERTION FORCE : 5N~20N.
7. UNMATING FORCE: 8N~20N.
8. DURABILITY:10,000 CYCLES.

NO.	DESCRIPTION	QTY	MATERIAL	REMARKS
6	SHELL	1	硅胶	镀镍 50"
5	SHELL	1	STAINLESS STEEL	NI Plated
4	SHIELDING PLATE	1	STAINLESS STEEL	NI Plated
3	CONTACT	1	COPPER ALLOY	Au/Ni Plated
2	SHELL HOUSING	1	HIGH TEMPERATURE PLASTIC	BLACK
1	HOUSING	1	HIGH TEMPERATURE PLASTIC	BLACK

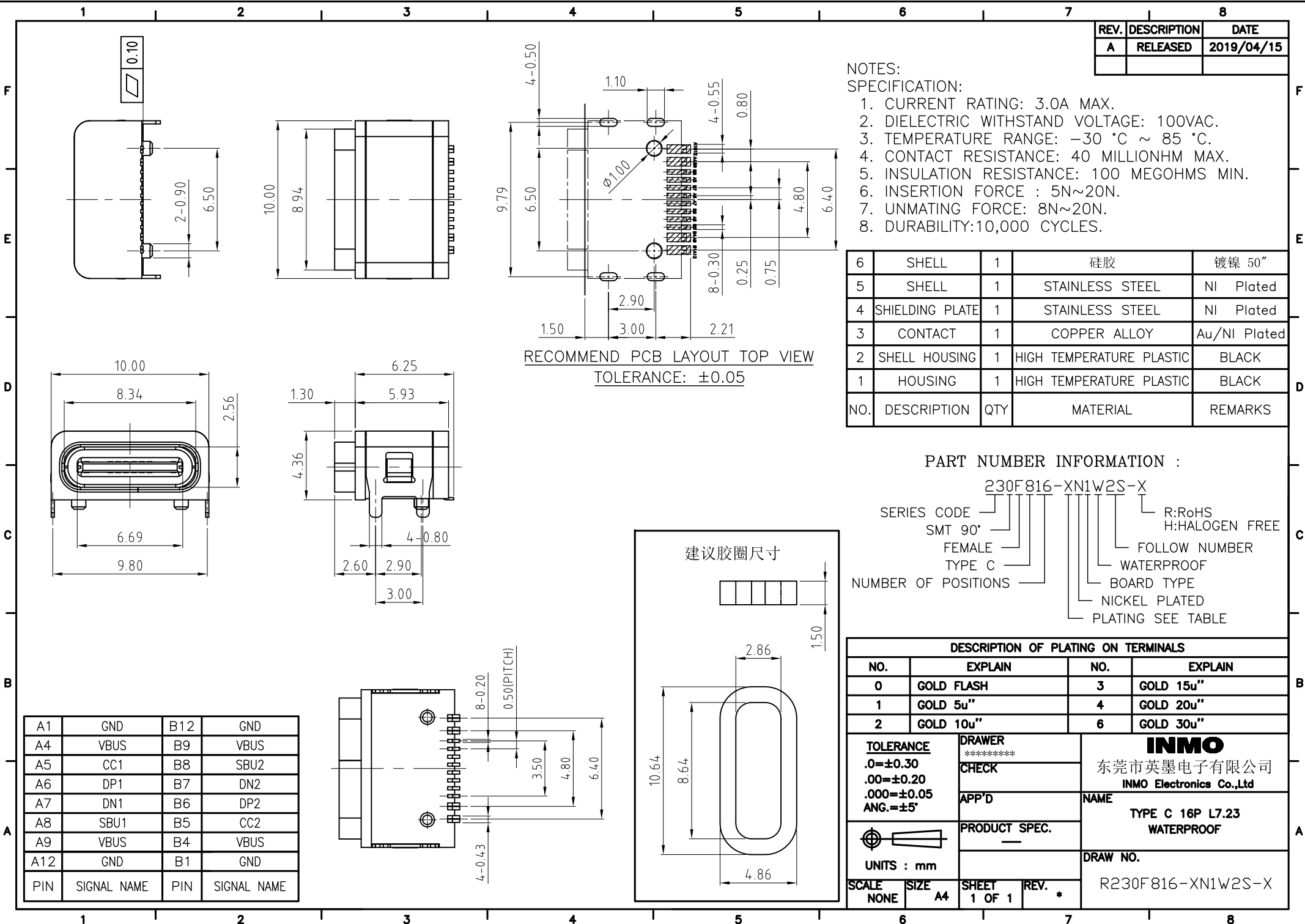
RECOMMEND PCB LAYOUT TOP VIEW  
TOLERANCE: ±0.05

PART NUMBER INFORMATION :



DESCRIPTION OF PLATING ON TERMINALS			
NO.	EXPLAIN	NO.	EXPLAIN
0	GOLD FLASH	3	GOLD 15u"
1	GOLD 5u"	4	GOLD 20u"
2	GOLD 10u"	6	GOLD 30u"

<b>TOLERANCE</b> .0=±0.30 .00=±0.20 .000=±0.05 ANG.=±5°		<b>DRAWER</b> ***** <b>CHECK</b> APP'D <b>PRODUCT SPEC.</b> _____		<b>INMO</b> 东莞市英墨电子有限公司 INMO Electronics Co.,Ltd <b>NAME</b> TYPE C 16P L7.23 WATERPROOF <b>DRAW NO.</b> R230F816-XN1W2S-X
<b>UNITS : mm</b> 	<b>SCALE</b> NONE	<b>SIZE</b> A4	<b>SHEET</b> 1 OF 1	



PIN	SIGNAL NAME	PIN	SIGNAL NAME
A1	GND	B12	GND
A4	VBUS	B9	VBUS
A5	CC1	B8	SBU2
A6	DP1	B7	DN2
A7	DN1	B6	DP2
A8	SBU1	B5	CC2
A9	VBUS	B4	VBUS
A12	GND	B1	GND